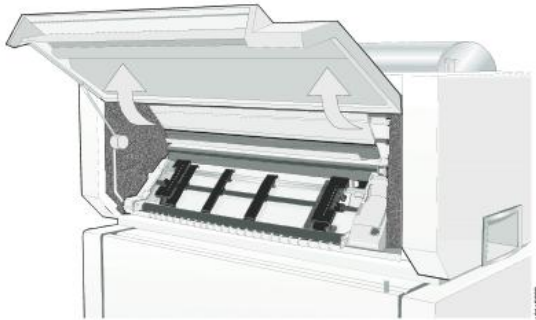


# Installing the optional second tractor

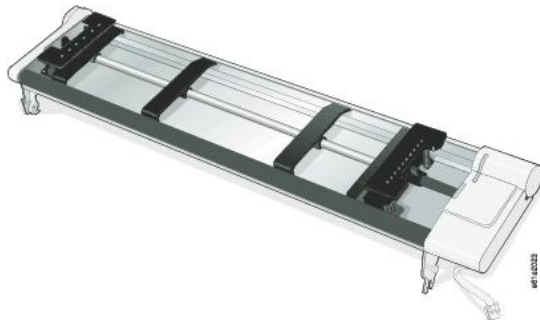
Your printer comes with one forms tractor already installed on the printer. When only this tractor is installed, the settings for the front paper path apply to the paper loaded on this tractor.

If instead the second (optional) tractor is installed in the printer, the settings for the front path apply to the paper loaded with the upper tractor, whereas the default tractor becomes the rear tractor.

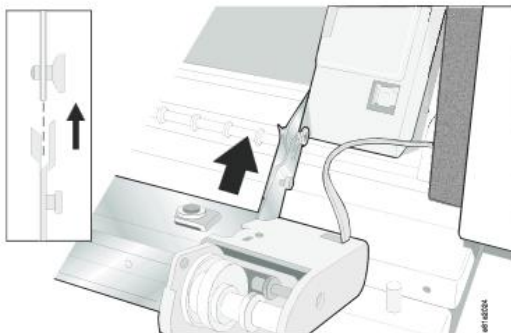
1. Open the tractor area cover.



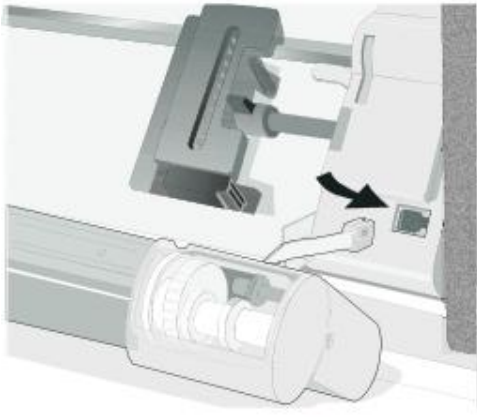
2. Unpack the second tractor.



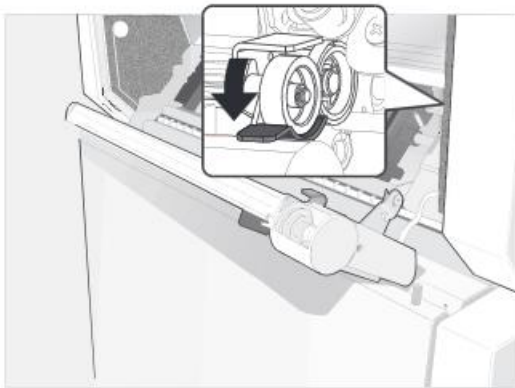
3. Align the hooks on both sides of the second tractor with the pins on the first tractor. Push the second tractor on the pins until it is fully engaged.



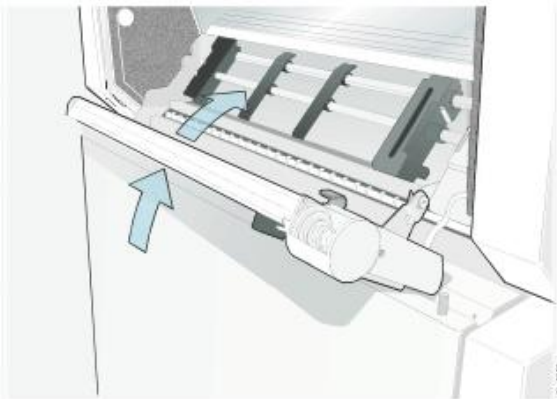
4. Connect the second tractor to the first



5. Rotate the tractor gear protection cover downwards to free the gear.



6. Rotate the second tractor into the closed operating position.



7. To load paper onto the first tractor when the second tractor is installed, rotate the second tractor out and insert paper between the two tractors

